



VSRT-E

Hybrid Gas & Electric Vertical Tubeless Steam Boilers

9.5 – 60 BHP



The **VSRT-E** combines the industry leading performance of VSRT gas fired steam boilers with zero-emissions electric heating to meet dual-fuel and sustainability goals.

ALL MODELS:
328 – 2,070 lbs/h Output F&A 212°F
ASME Section I & IV Designs



Low NOx
CERTIFIED



Hybrid
GAS/ELECTRIC



Hydrogen
READY

Up to 20% Blend

THE VSRT-E STEAM BOILER

The highly efficient Fulton VSRT-E steam boiler is ideal for facilities seeking the ultimate flexibility to operate their steam plant on low-emissions natural gas or zero-emissions electrical power.

- ▶ **Highest Efficiency**
Up to 86% efficiency on natural gas and up to 99% efficiency on electric operation.
- ▶ **Low-to-Zero Emissions**
CO₂ emissions 20% lower than conventional boilers when operating on gas. Zero scope 1 emissions when operating on electricity.
- ▶ **Easy to Operate**
Intuitive touchscreen controls enhance energy savings and advance building integration.



- ▶ **Built to Last**
Rugged boiler design and exceptionally durable components reduce overall life cycle resource use.
- ▶ **Low Maintenance Cost**
Spiral rib tubeless architecture features a 350% thicker heat exchanger than tubed designs, eliminating the need for costly re-tubing.

HYBRID OPERATION

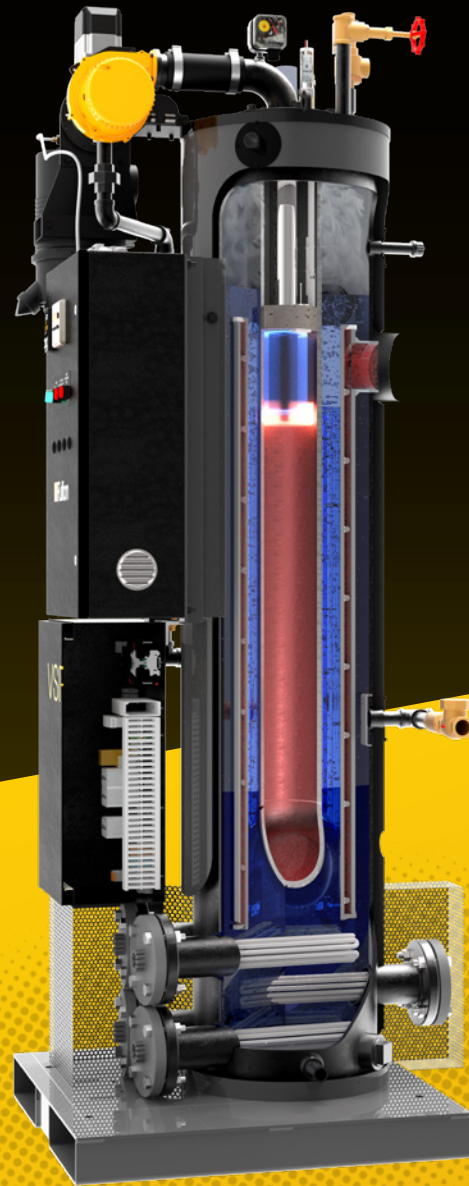
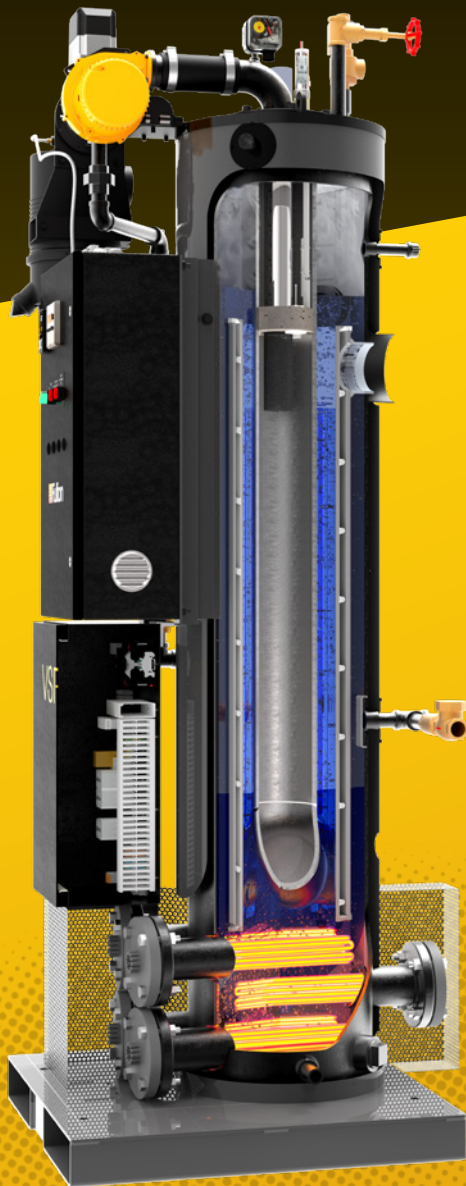
- ▶ **Automated Switchover**
Time-of-day fuel switchover allows the boiler to autonomously take advantage of off-peak electrical rates, simultaneously reducing emissions and lowering energy costs.
- ▶ **Future-Proof for Planned Infrastructure**
The VSRT-E may be operated exclusively or partially on either gas or electricity while awaiting future infrastructure.
- ▶ **Back-Up Energy Source**
Fuel curtailment and critical applications that cannot afford downtime may remotely switch between gas and electric operation.



- ▶ **Simplicity of Installation**
Electricity eliminates costly storage tanks, pumps and vaporization systems required for oil and propane; thereby simplifying the design and reducing points of failure for the utmost peace of mind.
- ▶ **Fuel Switching Made Easy**
Operations can be switched between gas and electricity via multiple means such as on board touchscreen control, remote contact and BAS communication.

INDUSTRY LEADING PERFORMANCE

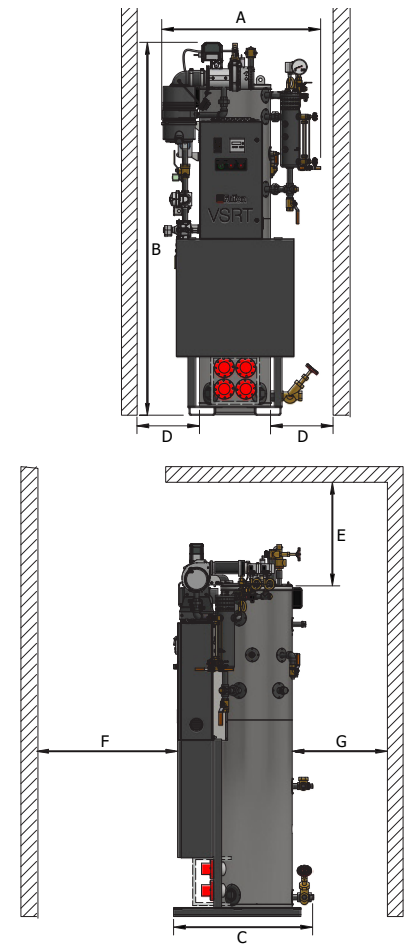
- ▶ **Zero Emission Electrical Operation**
Operating in electric mode reduces scope 1 emissions to zero.
- ▶ **High Efficiency**
Fully submerged INCOLOY 800 elements deliver direct heating; eliminating stack and purge losses with up to 99% efficiency.
- ▶ **Near-Infinite Turndown**
Precision Load Matching control; available SCR option offers near-infinite turndown.



- ▶ **Efficiencies up to 86% on Gas**
Advanced heat exchanger incorporating variable speed blower with parallel positioning controls provide up to 86% efficiency.
- ▶ **High Turndown Burner**
Enhanced load matching and significantly reduced cycling with up to 10:1 burner turndown.
- ▶ **Ultra Low NOx Emissions**
Configurable to <9 ppm NOx on natural gas, a 90% reduction compared to traditional burners.

SPECIFICATIONS & DIMENSIONS

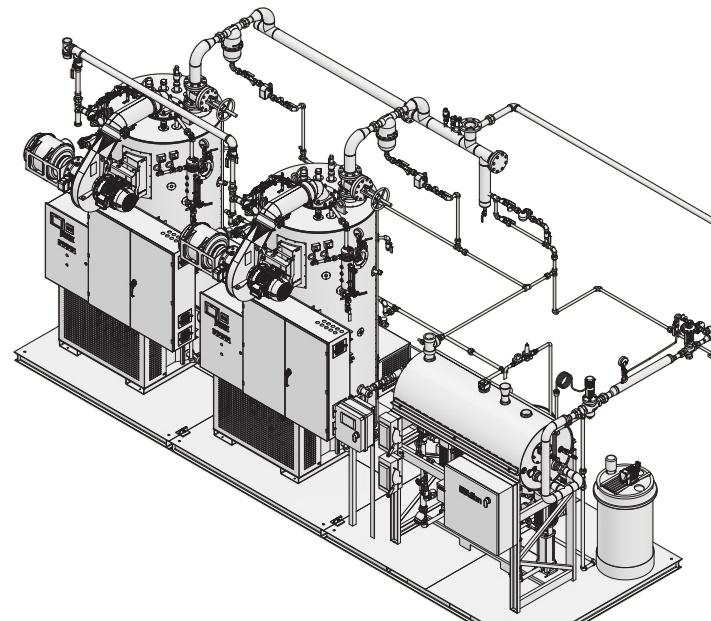
MODEL	VSRT-9.5-E	VSRT-40-E	VSRT-50-E	VSRT-60-E	
SPECIFICATIONS (GAS)					
Unit Size	BHP	9.5	40	50	60
Steam Output	LBS/HR	328	1380	1725	2070
Gas Input	MBH	399	1600	1993	2400
Gas Burner Turndown		8:1	6:1	8:1	10:1
SPECIFICATIONS (ELECTRIC)					
Unit Size	kW	95	405	500	610
Boiler Output	LBS/HR	332.5	1417.5	1750	2135
Stages	#	5	9	9	9
460V 3Ph Amps		124	510	630	768
575V 3Ph Amps		96	407	503	613
DIMENSIONS					
(A) Installed Width (480V)	IN	50.125	78.875	78.875	78.875
Minimum Width	IN	29	49	49	49
(B) Height	IN	95.25	124.375	127.375	124.375
(C) Depth	IN	42.375	84.125	84.125	84.125
(D) Side Clearance	IN	18	18	18	18
(E) Top Clearance	IN	15.5	25.125	25.125	25.125
(F) Front Clearance	IN	36	22.25	22.25	22.25
(G) Rear Clearance	IN	24	36.125	36.125	36.125



ENGINEERED SOLUTIONS

Fulton can design and build a system tailored to your specific needs. Be a part of the process, from concept to delivery, ensuring timely and accurate completion of your engineered system.

- ▶ Industry Leader in Systems Engineering
- ▶ Single-Source Turnkey Systems
- ▶ Wide Range of Ancillary Equipment



Call: (315) 298-5121

972 Centerville Road
Pulaski, NY 13142



fulton.com/vsrt

VSRT-E_BROCHURE_231214