

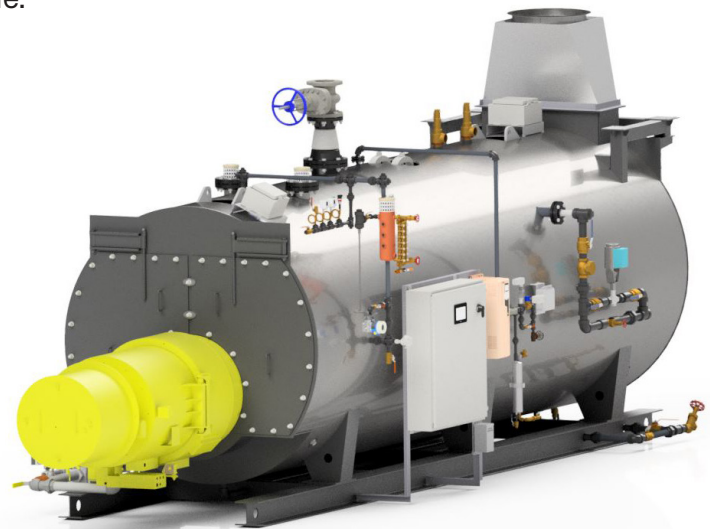
FBS 3-Pass Firetube Stock Steam Boiler

Model: FBS-475

Location: Fresno, California

The Fulton FBS firetube steam boiler is fully factory tested through BEP hydro and ready for install. Each boiler comes fully fitted with a listed burner and water side controls. The FBS boilers rugged thick tube wall design combine high operating efficiency with extended boiler life.

Boiler Rating:	475 BHP
Fuel Type:	Natural Gas
Boiler Input:	19,393,000 BTU/hr
Boiler Output:	16,388 LBS/HR
Trim Pressure:	150 PSI
Min/Max Gas Pressure Req.:	2.2/7 PSI
Electrical Power Req.:	460/60/3 64 AMPS
Turndown:	4:1
NOx:	5 PPM



Built To Codes:

ASME Section I, CSD-1, UL-508A Control Panel

Fitted & BEP Tested Trim:

- Modulating Feedwater with Bypass
- Steam Stop Valve
- Manual Bottom Blowdown Valves - (2) Quick, (1) Slow
- Automatic Conductivity Based Surface Blowdown Assembly with Sample Cooler
- DP level control

Burner & Combustion Controls:

- ST Johnson NM600A40V Burner
- Siemens LMV52

Reference Drawings B91-10108 and B53-15298

Dimensions & Weights:

Width:	113-5/16"
Length:	348-15/16"
Height:	126-7/16"
Shipping Weight:	37,500 lbs
Flooded Weight:	47,055 lbs

Connection Sizes:

Gas Inlet:	2-1/2" NPT
Feedwater Inlet:	2" NPT
Bottom Blowdown:	1-1/2" NPT
Steam Outlet:	6" 150# Flange
Stack:	22"