

FULTON RENTAL HEATERS



NATIONAL BOARD#: 1762
MODEL: FT-0600C

Fulton Thermal Corporation
972 Centerville Road
Pulaski, New York 13142
(315) 298-5121

NATIONAL BOARD #1762

Model:	FT-0600C
ASME Certification:	ASME Section I 150 PSI MAWP 100 PSI Trim
Enclosure:	NEMA 4
Fuel:	Natural gas
Circulating Pump:	Dean RA3000 4 x 6 x 8½ (375 GPM @ 67 PSI) with a 50HP motor
Max. Operating Temp:	650°F

MAJOR CUSTOMER CONNECTIONS:

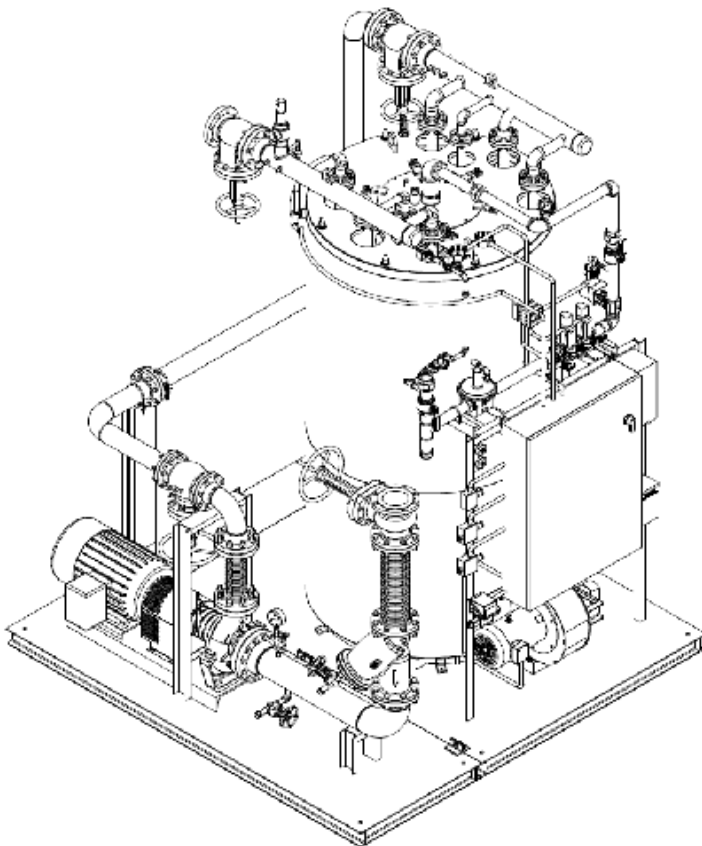
Electrical:	460/60/3, 83A
Thermal Fluid Supply:	4" CL300 flanged connection
Thermal Fluid Return:	6" CL150 flanged connection
Natural Gas:	2" NPT connection, 1.5 - 5 psi supply pressure, 7500 cfh
Fuel Train Vents:	(1) ¾" NPT, (1) ¼" NPT, (1) 1/8" NPT connection
SRV Discharge (Heater):	3" NPT connection
Flue:	18" outlet only, no stack

THERMAL FLUID HEATER WEIGHTS:

Dry Weight:	13,940 lbs.
Operating Weight:	15,775 lbs.

SHIPPING WEIGHTS:

Heater:	10,240 lbs.
Pump Skid:	3,700 lbs.
Thermal Fluid Volume:	220 gallons
Skid Dimensions:	111"L x 114"W x 144"H



MECHANICAL DRAWING: T99-2115 REV A

ELECTRICAL DRAWING: T53-10506