

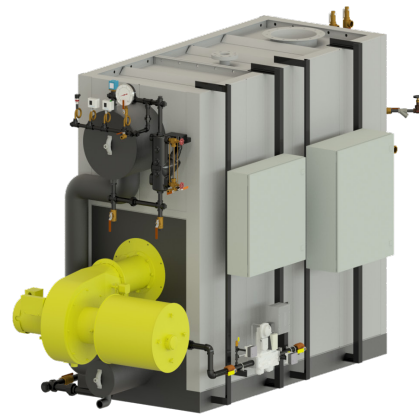
FBX 5-Pass Watertube Stock Steam Boiler

Model: FBX-0500-HP (Derated)

Location: Fresno, California

The Fulton FBX water tube steam boiler is fully factory tested through BEP hydro and ready for install. Each boiler comes fully fitted with a listed burner and water side controls. The FBX boiler features a 5-pass design with turbulating baffles for industry leading operating efficiency.

Boiler Rating:	119 BHP
Fuel Type:	Natural Gas
Boiler Input:	4,999,000 BTU/hr
Boiler Output:	4,106 LBS/HR
Trim Pressure:	150 PSI
Min/Max Gas Pressure Req.:	1.3/5 PSI
Electrical Power Req.:	460/60/3 17.6 AMPS
Turndown:	4:1
NOx:	<7 PPM



Built To Codes:

ASME Section I, CSD-1, UL-508A Control Panel

Fitted & BEP Tested Trim:

- Feedwater Stop and Check Valve
- Manual Bottom Blowdown Valves - (2) Quick, (1) Slow
- Manual Metering Surface Blowdown Assembly
- On/Off Float Type

Burner & Combustion Controls:

- ST Johnson NMV-7F Burner
- Siemens LMV5

Reference Drawings B91-10065 and B-999-11-7F-4560V

Dimensions & Weights:

Width:	70"
Length:	170-7/8"
Height:	97-7/8"
Shipping Weight:	9,300 lbs
Flooded Weight:	10,710 lbs

Connection Sizes:

Gas Inlet:	1-1/4" NPT
Feedwater Inlet:	1-1/4" NPT
Bottom Blowdown:	1-1/2" NPT
Steam Outlet:	3" 300# Flange
Stack:	14"