

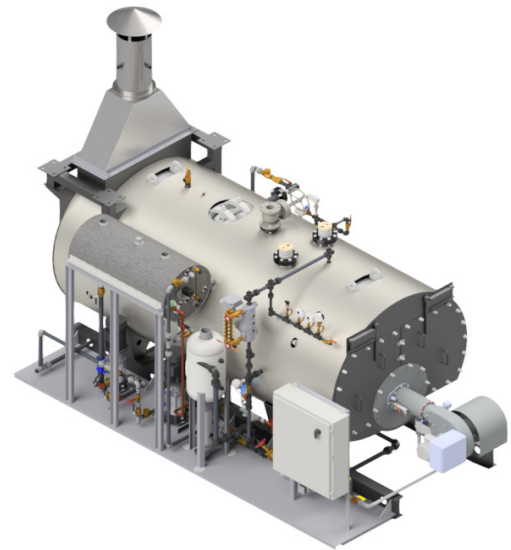
## FBS 3-Pass Firetube Rental Steam System

**Model: FBS-50**

**Location: Fresno, California**

The Fulton Rental Steam System is a fully integrated steam generation system that includes a high efficiency boiler, feed system and blowdown separator. Designed for quick deployment, it arrives pre-piped, pre-wired, and ready to produce steam with minimal on-site setup. Available as a rental unit, it offers a reliable and flexible solution for temporary steam needs across various industries.

<b>Boiler Rating:</b>	50 BHP
<b>Fuel Type:</b>	Natural Gas
<b>Boiler Input:</b>	2,041,500 BTU/hr
<b>Boiler Output:</b>	1,725 LBS/HR
<b>Trim Pressure:</b>	150 PSI
<b>Min/Max Gas Pressure Req.:</b>	0.9/5 PSI
<b>Electrical Power Req.:</b>	460/60/3 10 AMPS
<b>Turndown:</b>	5:1
<b>NOx:</b>	9 PPM



### Built To Codes:

ASME Section I, CSD-1, UL-508A Control Panel

### Fitted & BEP Tested Trim:

- ❑ On/Off Feedwater - Stop and Check Valve
- ❑ Steam Stop Valve
- ❑ Manual Bottom Blowdown Valves - (2) Quick, (1) Slow
- ❑ Automatic Conductivity Based Surface Blowdown Assembly with Sample Cooler
- ❑ On/Off Probe Type Water Level Control

### Burner & Combustion Controls:

- ❑ ST Johnson NMV-4X
- ❑ Siemens LMV3

*Reference Drawings B91-10110 and B53-15261*

### Dimensions & Weights:

<b>Width:</b>	96"
<b>Length:</b>	188"
<b>Height:</b>	148 - 5/8"
<b>Shipping Weight:</b>	13,900 lbs
<b>Flooded Weight:</b>	23,797 lbs

### Connection Sizes:

<b>Gas Inlet:</b>	1" NPT
<b>Single Point Water Inlet:</b>	1" NPT
<b>Single Point Drain Outlet:</b>	4" NPT
<b>Steam Outlet:</b>	3" 150# Flange
<b>Stack:</b>	12"