

FBS 3-Pass Firetube Rental Steam Boiler

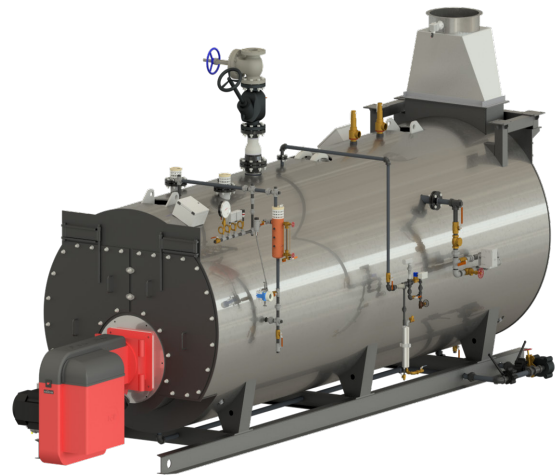
Model: FBS-350

Location: Fresno, California

The Fulton FBS firetube steam boiler is fully factory tested through BEP hydro and ready for install. Each boiler comes fully fitted with a listed burner and water side controls. The FBS boilers rugged thick tube wall design combine high operating efficiency with extended boiler life.

Boiler Rating:	350 BHP
Fuel Type:	Natural Gas
Boiler Input:	11,717,650 BTU/hr
Boiler Output:	12,075 LBS/HR
Trim Pressure:	150 PSI
Min/Max Gas Pressure Req.:	1.5/7.3 PSI
Electrical Power Req.:	460/60/3 29 AMPS
Turndown:	2.7:1
NOx:	9 PPM**

**Boiler can achieve 7 PPM Nox at 300HP



Built To Codes:

ASME Section I, CSD-1, UL-508A Control Panel

Fitted & BEP Tested Trim:

- ❑ Modulating Feedwater with Bypass
- ❑ Steam Stop Valve & Straight Non-Return
- ❑ Manual Knife Type Bottom Blowdown Valves - (2) Quick, (1) Slow
- ❑ Automatic Conductivity Based Surface Blowdown Assembly with Sample Cooler
- ❑ DP level control

Burner & Combustion Controls:

- ❑ Oilon GP-600 M LN30 WD100
- ❑ Siemens LMV5

Reference Drawings B91-9176 and EL001101_013

Dimensions & Weights:

Width:	119-1/2"
Length:	318"
Height:	138-7/8"
Shipping Weight:	37,100 lbs
Flooded Weight:	47,055 lbs

Connection Sizes:

Gas Inlet:	2" NPT
Feedwater Inlet:	1-1/2" NPT
Bottom Blowdown:	1-1/2" NPT
Steam Outlet:	4" 150# Flange
Stack:	20"